

Model MC2070C Compact Differential Pressure Transmitter



MC2070C Differential Pressure Transmitter is assembled by piezoresistive-silicon differential pressure sensor, and the housing is stainless steel structure similar with MC20A. MC2070C Differential Pressure Transmitter is moisture-proof, waterproof, and corrosion-resistant. It can work in harsh environments and outdoor conditions. The transmitter has a small volume and light weight, which can be installed on the process pipeline and supported. Compared with transmitters that require a base or bracket, it greatly reduces installation and maintenance costs or connected through the press-leading tube. It is widely applied in the air supply for boiler, underground ventilation and other electricity and mining industries, as well as the process control field of automated pressure detection for the super clean workshop. It is suitable for differential pressure or pressure measuring for medical treatment, chemical fiber, electricity, dustless house and etc. The transmitter uses proprietary current output with wide temperature compensation and provides a stable zero regardless of the transducer environment.

FEATURES

SS316L diaphragm structure

Easy to install

The zero point and full span of the product can be adjusted externally

With the short circuit protection and reverse polarity protection

Shock resistance, anti-vibration, anti-electromagnetic compatibility

SPECIFICATIONS

Supply Voltage	12 to 36V
Operating Range	(Differential/Gage/Negative Pressure):(-100KPa)-(-100Pa)-0~100Pa-300KPa-7MPa
Accuracy	$\pm 0.25\%$, $\pm 0.5\%$ (25°C)
Over Pressure	200-300% full scale
Long Term Stability	<0.25%FS per year
Response	<100ms

Output Signal	(4~20)mA (2/3/4-wires) , (0~10/20) mA (0~5) V, (1~5) V, (0~10) V, etc.
Temperature Range	-20~85℃
Temperature Effects	0.015%FS/℃
Housing	Stainless Steel
Protection Class	IP65

ORDERING CODES

MC2070	Differential Pressure Transmitter	
-	Appearance Type	C: Normal (without display) CE: with LED display CC: with LCD display
-	Pressure range	e.g. 0-10bar or 0-1MPa etc.
-O	Signal Output	1: 4-20 mA 2-wires 2: 4-20 mA 3-wires 3: 4-20 mA 4-wires 4: 0-5V 5: 0-10V 6: 1-5V 7: 1-10V 8: 0-10mA 9: 0-20mA 11: RS485 0: specified (Please Mention)
-S	Cable Leading-out Type	1: Hirschman 2: Directly Cable 3: Thread 4: User Specified
-A	Installment type	1: thread 4: customer specified
-	Size of installment	e.g. for A1, -1/2BSP or -M20*1.5 etc.; for A3, -2" or 3" etc.

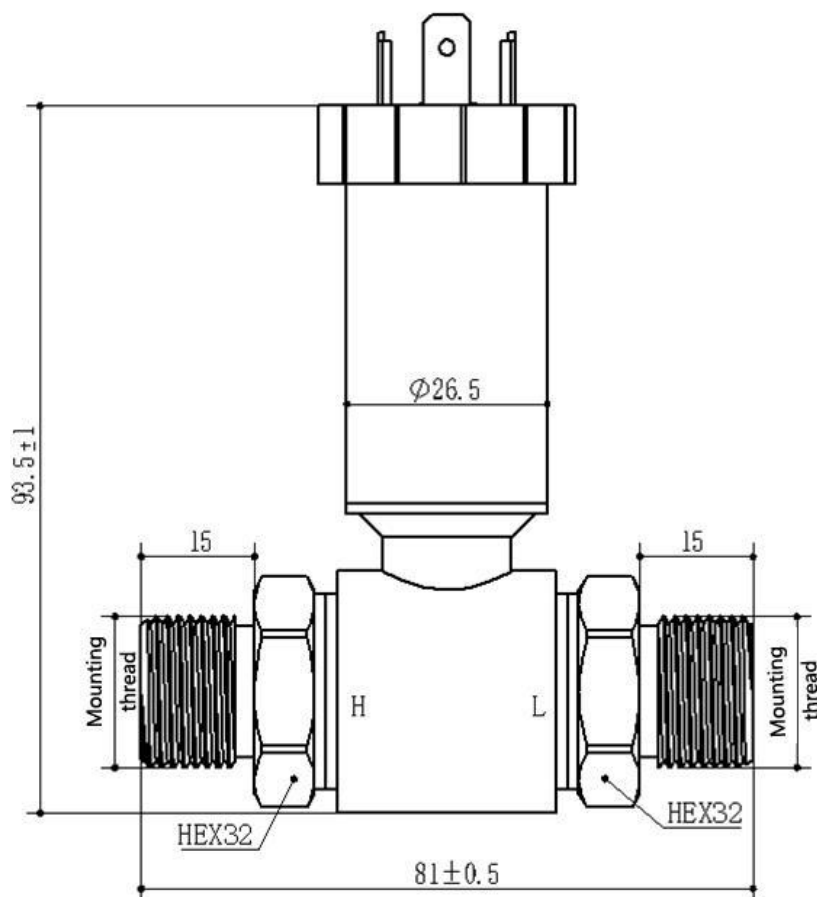
CABLE LEADING-OUT TYPE

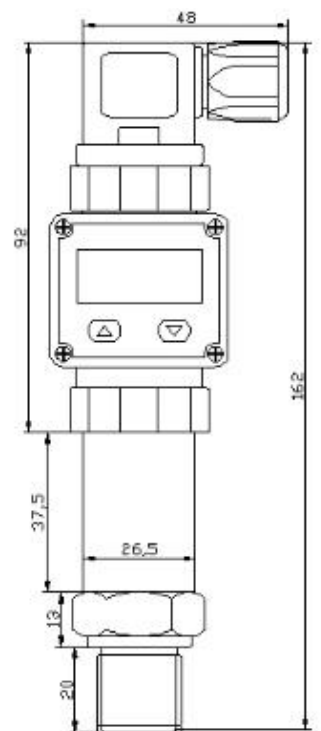
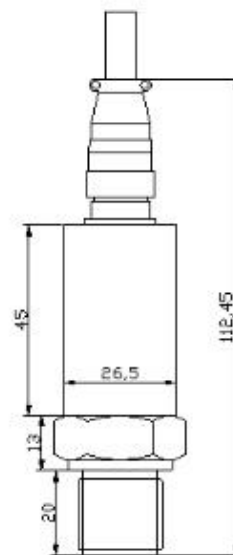
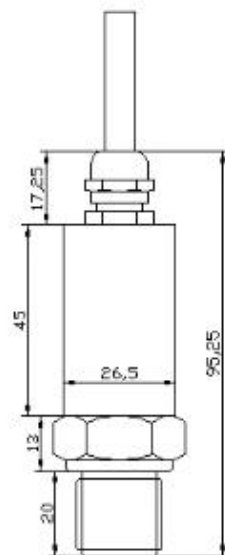
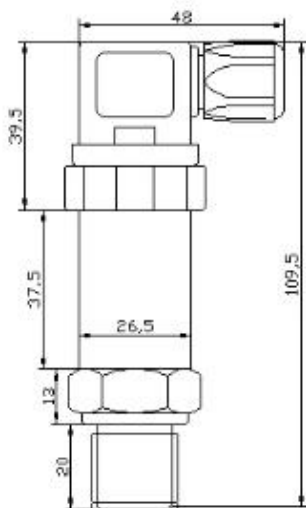
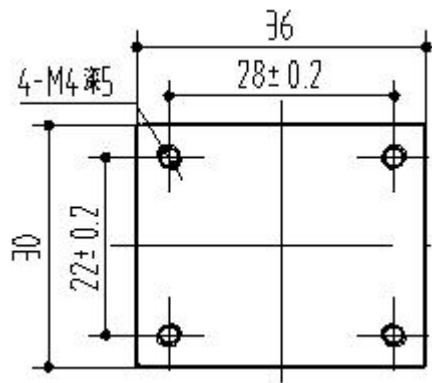


With LED display:



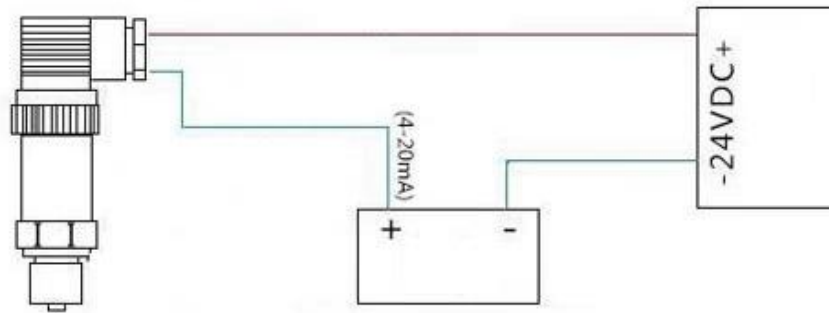
DIMENSIONS





WIRING

2-wires:



3-wires:

