

## MYM-X Low Pressure Capsule Pressure Gauge



MYM-X Series is a premium capsule pressure gauge designed for low pressure measurement on various condition. This series are light pressure gauges with cauterization resisting referring to the structure of normal gauges with capsule, used in the equipment of boiler pipe and gas tube to measure the low pressure or loading pressure of each kind of liquid medium which have higher request of cauterization-resisting.

The gauge is made up of measurement system (including flange connection head, ripple diaphragm), turnable parts (including connection rod), display parts (needle, dial), and crust (including crust and washer, and glass). The working principle is when the ripple capsule element under the pressure from measured medium, the free end will raise transfiguration accordingly, referring to the connection rod to make the turnable part circle and blow up, then the needle will display the data. There is protection device to prevent the capsule from transfiguration when over loading, and there is zero adjustment device also, which can adjust zero point conveniently.

### Technical Specification

Nominal Dial Size (mm): 63(2.5'), 75(3'), 100(4'), 150(6'), 200(8'), 250(10')

Pressure Range (KPa):

Positive Pressure: 0~1.6, 0~2.5, 0~4, 0~6, 0~10, 0~16, 0~25, 0~40

Negative Pressure: -1.6~0, -2.5~0, -4~0, -6~0, -10~0, -16~0, -25~0, -40~0

Compound Pressure: -0.8~+0.8, -1.2~+1.2, -2~+2, -3~+3, -5~+5, -8~+8, -12~+12, -20~+20

Accuracy Class: Class 1.6, Class 2.5 (Ø63, 75mm);

Ingress Protection: IP54

Connection Size: G3/8, G1/4, G1/2 or NPT or others

Tube Element Shape: Capsule type diaphragm tube

Operating Temperature: Ambient temperature -10°..+70°C; Medium temperature 90°C Max.

Temperature affection: When the difference is  $20\pm 5^{\circ}\text{C}$ , the additional error should be  $0.4\%/10^{\circ}\text{C}$  or smaller.

Working Installation: Vertical

Material of Pressure Conducting System and Main Components

Connector: Brass or Stainless Steel (304SS or 316SS)

Capsule: Bronze or Stainless Steel (304SS or 316SS)

Gear Turnable Parts: Brass or Stainless Steel (304SS or 316SS)

Case: Steel or Stainless Steel (304SS or 316SS)

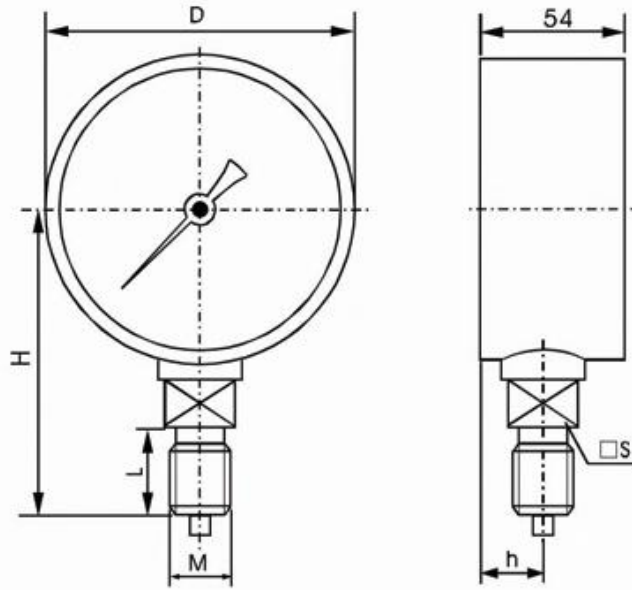
Pointer: Black painted aluminum

Dial Plate: Aluminum alloy

### Model Selection

MYM	Low Pressure Capsule Pressure Gauge	
	Dial diameter	E.g. -100 (100mm), or -4". etc.
-	(Pressure range)	e.g. (0-10bar) or (0-1MPa) etc.
-	Type	None: bottom installation connection Z: back center installation connection ZD: back bottom installation connection T: edge flange installation connection
-	Material	-SS: SS case and SS wet parts -SB: SS case and brass wet parts -CB: steel case and brass wet parts -O: specified For SS (stainless steel) , please specified 304SS or 316SS.
-A	Installment type	1: thread 4: customer specified
-	Size of installment	e.g. -1/2BSP or -M20*1.5 etc.;

Dimensions:



	D	H	L	M	h	□S
YE-75	φ77	71	14	M14×1.5	14	□17
YE-100	φ100	90	20	M20×1.5	17	□22
YE-150	φ150	118	20	M20×1.5	17	□22

**Applications**

Used to measure micro pressure and negative pressure of gas that has no corrosion to copper alloy.

**Case:** stainless steel (black painting steel,chromed steel,ABS)

**Ring:** no (black steel,black painting steel,chromed steel)

**Window:** acrylic (glass,acrylic,glass polycarbonate)

**Socket & Connection:** brass

**Movement:** semi-brass (complete brass)

**Capsule:** copper alloy.

**Pointer and dial:** aluminum

**Rang:**  $\pm 25$ mbar, minimum pressure.

**Accuracy Class:** F $\pm 3/2/3\%$ (ASME B40.100 Grade B)

KI 2.5 FOR 1 1/2",2",KI 1.6 FOR 2 1/2",3",4"

**Operating temperature**

**Ambient:** -40°F to 140°F (-40°C TO 60°C)

**Media:** 140°F (+60°C)



122AL



122AB



122BU



122BV



R1 High pressure radiator



R2 Capillary radiator



R3 High-Temperature tube



Overpressure protector



One Valve



One Valves With A Bleeding Screw



Two Valves



Syphon